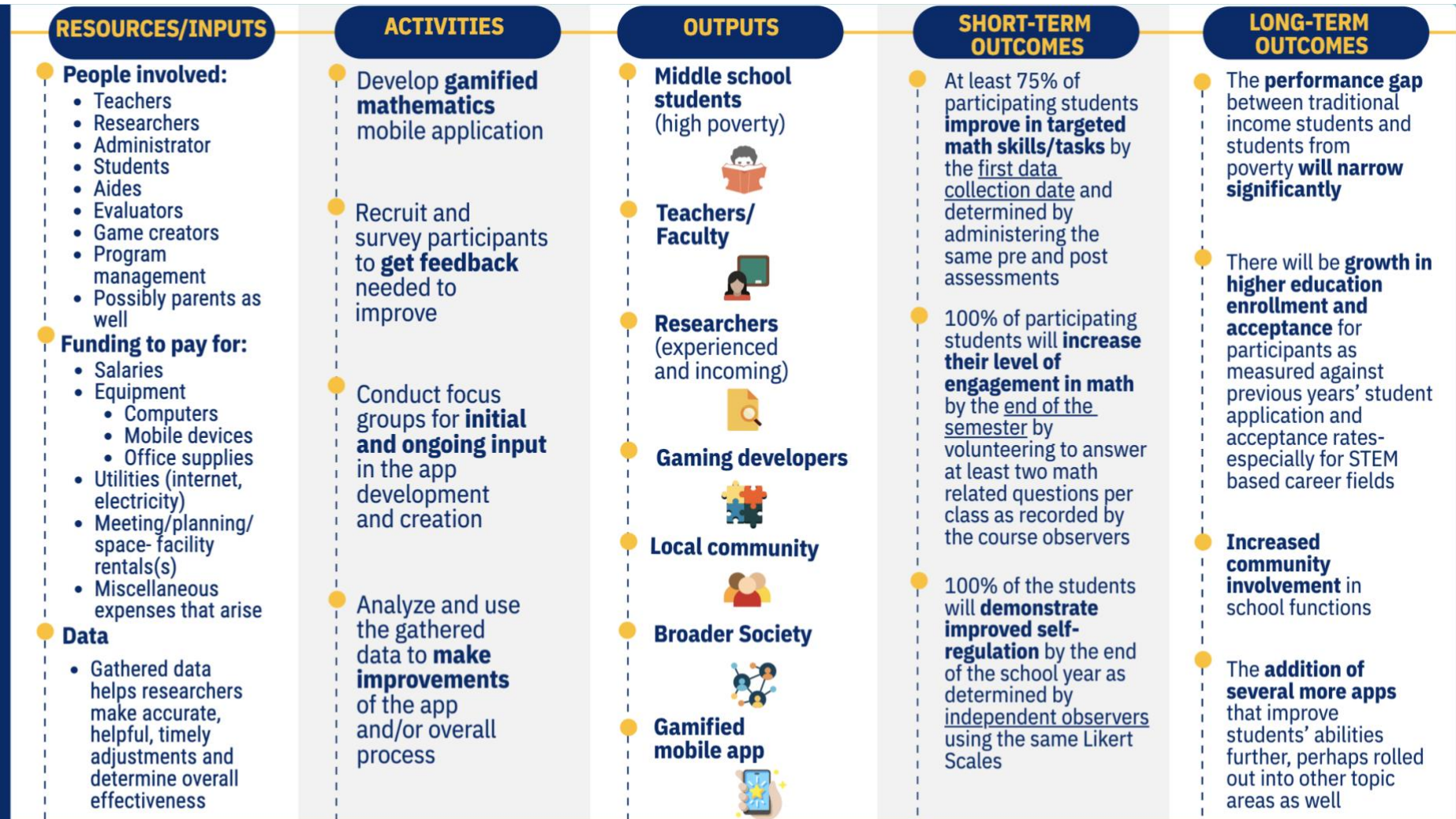


LOGIC MODEL by

Erik Shimizu and Raen Maralit

**MATH GRANT FOR SYRACUSE
FOR K-12 SCHOOLS**

This logic model is a visual representation of the various tools, people, activities, outputs, and outcomes (short and long) we estimate will be required to create, implement, monitor/administer, and evaluate your project, based on all information we were provided with and gathered ourselves.